

RFID solution for the concrete industry provides real-time, high definition view of the business and cradle to grave traceability.

RFID, radio frequency identification, technology offers state-of-the-art solutions for many industries while the concrete industry has some of the most challenging scenarios for this promising technology. Tom Tilson, President of International Coding Technologies, Inc. (ICT), developed Cast-A-Code®, a breakthrough RFID solution for the manufactured concrete industry. This revolutionary castable RFID inlay, made specifically for concrete structures, allows the concrete industry to track information throughout the lifecycle of concrete structures.

The manufactured concrete industry continues innovating and developing new ways to increase productivity in a more complex and competitive world. Unlike most other industries, the challenging environmental conditions of concrete production have limited the use of barcode and RFID technologies in monitoring workflow and other aspects of the business.

“Looking at the industry, large amounts of capital have been invested in assets such as building and equipment and less has been invested in productivity tools to manage these expensive resources,” said Tilson “TrackCon® fills that void by giving management tools to maximize their ROI on these costly assets.”

For many managers, current systems are labor intensive, time consuming and susceptible to human error. Cast-A-Code®, with ICT’s TrackCon® software, provides management with a system to report and manage QC, workflow, inventory and shipping. This unique RFID product can also help enhance both in-plant productivity as well as the customer experience.



Cast-A-Code® with human readable, bar code and RFID

With its resilient water tight construction, Cast-a-Code® allows the concrete producer to identify structures and track them through the entire process including fabrication, pre-pour, postpour, finish, yard and eventually to the customer and job site. With its patent pending design, it is easily placed in the mold or bed by production personnel. Once the Cast-A-Code® is associated with a structure, management now has real-time, high definition access to information tracked to that structure such as, information on job, accessories, repair, and location.

“To ensure accuracy, periodic inventory counts are most often done by experienced people,” said Tilson “with TrackCon®, the producer can now scan the Cast-A-Code® on a cycle count basis with entry level personnel.”

Identification of a structure is supported in three ways with a single Cast-A-Code® tag, standard easy to read format with human readable serial number, bar-code and RFID scan. With the producers name and number clearly printed on each Cast-A-Code®, customers or engineers can call to get further information on the structure. Cast-a-Code® can also be scanned through 12 inches of concrete providing the industry cradle to grave traceability. Additionally, with the use of TrackCon® Batch-Match® software, the producer is provided real time tracking of batch number to structure, the final feature that closes the quality loop. Tilson has found enthusiastic response from the industry since introducing the Cast-A-Code® and TrackCon® products earlier this year. Initial installations are going well.

“We believe the combination of Cast-A-Code® and TrackCon® will give our business the same real-time management tools other industries have enjoyed for years.” states Gregg Stratis, General Manager at EF Shea New England.

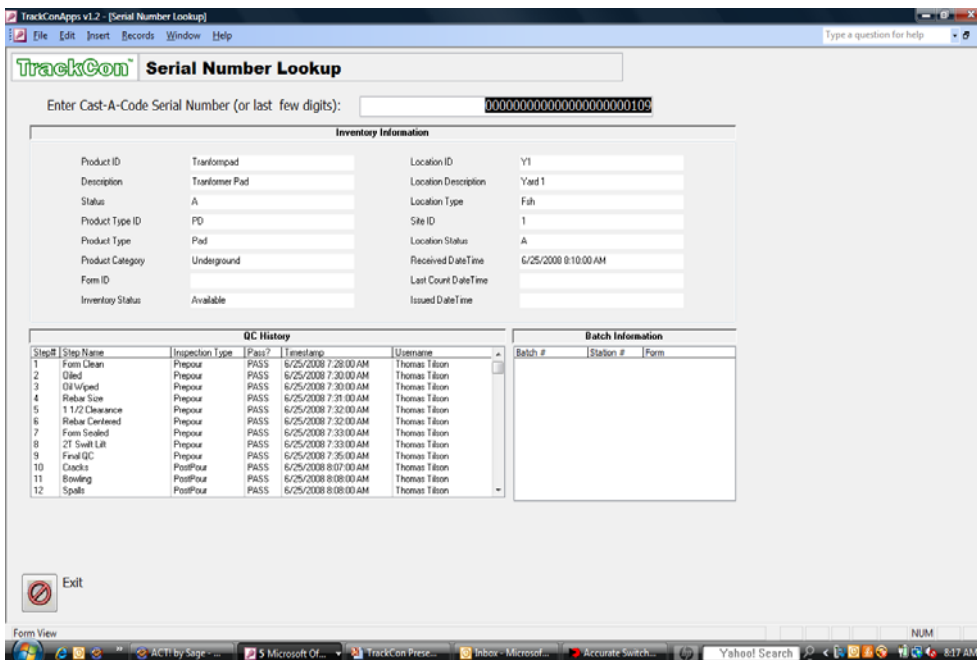


TrackCon® on mobile computer

Cast-a-Code® combined with TrackCon® software, allows management to address the following areas:

- ERP/MRP system integration

- Customer defined quality control process for each product by stages such as Fabrication, Pre-Pour, Post-Pour and Finish
- WIP/Finished goods inventory tracking
- Cycle counting
- Job download and tracking
- BatchMatch® associates batch number to concrete structure in real time
- Locating inventory is enhanced with the addition of a GPS receiver
- Kit/Job sheet validation allows the operator to record operations performed on a product as part of a job
- Forklift scanning without operator leaving truck
- Pick & ship validation
- Proof of delivery



TrackCon® Master Item screen with QC History

Further information:



International Coding Technologies, Inc.

PO Box 7072

Beverly MA USA 01915

T + 1 978 568 3460 x7014

M+ 1 617 510 6691

F+ 1 978 964 0778

TTilson@TEMASolutions.com

www.TEMASolutions.com